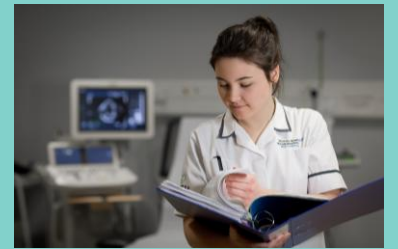
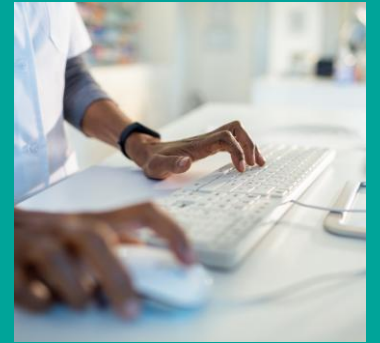


# NHSE WT&E Midlands Pharmacy

May 2026






# May Updates

- Foundation Pharmacist
  - FPHP Mandatory Assessment Requirements
  - Support for Supervisors
  - Onboarding process for Trainee Foundation Pharmacist 26/27
- Independent Prescribing 2026/27
- Pharmacy Technicians
  - Community Pharmacy Technician Apprenticeship Programme 2026
- WT&E Update
  - Education Commissioning Intention Letters 2026/27

# Foundation Pharmacist



# Foundation Trainee Pharmacist Programme (FTPP) mandatory assessment requirements – reminder for training sites

- All training sites are required to use the **NHS England FTPP Assessment Strategy** and document the completion of this within the NHS England **e-portfolio**
  - Monitoring shows that most training sites are engaged with applying the Assessment Strategy, completing the activities within this and uploading these to the e-portfolio, but a minority of sites are not
- As a reminder, the mandatory requirements for all training sites include:
  - Submission of a **Training Plan** to NHS England via the e-portfolio
  - Completion of all **activities** within the **Assessment Strategy** including the **Professional Development Activities** and the **Observed Clinical Activities**
  - Completion of the Final Sign Off process for the trainee pharmacist
  - Use of the **NHS England e-portfolio** to upload documentation/evidence of completion of these activities within the required timescales
- **If a training site has not completed the mandatory requirements set out above:**
  - the trainee pharmacist will not have satisfactorily completed the FTPP
  - NHS England will be unable to confirm completion of foundation training to the GPhC
  - the trainee pharmacist will be unable to join the register as a pharmacist

# Foundation Trainee Pharmacist Programme (FTPP) mandatory assessment requirements – reminder for training sites

To support the timely completion of the NHS England Foundation Trainee Pharmacist Programme the designated supervisor (DS) must affirm to NHS England and the GPhC that the mandatory activities have been completed as described.

An end of year checklist has been produced to aid the DS prior to completing the final declaration.

## [End of year checklist for DSs](#)



### End of year checklist for DSs

This is a list of mandatory requirements of the NHS England foundation training programme. As part of the final declaration the DS is affirming to NHS England and the GPhC that each of these activities has been completed in the way described.

Checklist of activities that must be completed before a DS commences the final declaration	
<b>All trainees</b>	
1	Training plan uploaded and saved
2	Initial Learning Needs Analysis (LNA) recorded in e-portfolio
3	Learning Agreement signed by trainee and DS in e-portfolio
4	All relevant trainee evidence has been reviewed
5	All Learning outcomes have been signed off as satisfactory
6	Identified a second person to contribute to the sign-off decision.
7	All previous progress reviews have been completed and recorded in the e-portfolio <ul style="list-style-type: none"> <li>a - Week 13</li> <li>b - Week 26</li> <li>c - Week 39</li> </ul>
8	All assessment activities relating to personal development, supplying medicines, education and research, and mandatory and specific development have been carried out <ul style="list-style-type: none"> <li>a - Feedback received from colleagues or patients using the patient satisfaction questionnaire or multi-source feedback in the e-portfolio</li> <li>b - Evidence included in eportfolio to demonstrate competence with technical and legal prescription issues and preparing and supplying medicinal products</li> <li>c - Evidence included in eportfolio that demonstrates the trainee has undertaken teaching and mentoring and research, audit or quality improvement</li> <li>d - Trainee has completed first aid/basic life support and uploaded evidence to the e-portfolio</li> <li>e - Trainee has completed training and uploaded evidence to the e-portfolio relating to               <ul style="list-style-type: none"> <li>i safeguarding children and vulnerable adults,</li> <li>ii health and safety,</li> <li>iii using digital systems and</li> <li>iv development and application of advanced therapies</li> </ul> </li> <li>f</li> </ul>

i	All observed clinical activities have been completed and recorded on the appropriate supervised learning event (at least 3 times with a satisfactory assessment), recorded within the e-portfolio	
ii		
iii		- Medicines reconciliation (using Mini-CEX or DOPs)
iv		- Patient Consultation (using Mini-CEX or MRCF)
v		- Medicines Optimisation (using Mini-CEX or CBD)
vi		- Public Health Intervention (using DOPs or CBD) - Medicines Safety (using DOPs or CBD) - Responding to medicines query (using DOPs or CBD)
<b>Trainees on full learning outcomes (including independent prescribing)</b>		
9	Prescribing Learning Agreement signed by trainee and DPP	
10	Prescribing learning needs analysis and personal development plan recorded in the e-portfolio	
11	Confirm that the DPP has completed the final prescribing development review, including: <ul style="list-style-type: none"> <li>a - Satisfactory completion of the prescribing assessment activities</li> <li>b - At least 90 hours of logged prescribing activity</li> </ul>	
12	A suitable nominated prescribing area has been recorded in the e-portfolio	
13	All observed clinical activities have been completed and recorded on the appropriate supervised learning event (at least 3 times with a satisfactory assessment), recorded within the e-portfolio <ul style="list-style-type: none"> <li>a - History taking (mini-CEX or DOPS)</li> <li>b - Physical and clinical Examination skills (DOPS)</li> <li>c - Prescribing consultation (Mini-CEX or MRCF)</li> <li>d - Prescription Writing (DOPS or CBD)</li> </ul>	



# Onboarding for Trainee Foundation Pharmacists starting Summer/Autumn 2026

**Programme start window:**

**Summer window is 13 July to 3 August 2026**

**Autumn window: 19 October to 9 November**

A GPhC requirement is that all trainees must have a confirmed Designated Supervisor before starting the programme.

Two routes to verify or register depending on whether you are an existing DS or new DS.

Designated Supervisors will need the following before completing the registration form:

- Trainee's correct name
- Oriel PIN
- Training start date

# Designated Supervisor Requirements 2026

## Existing Designated Supervisors

Email sent on Wednesday 6 May 2026 from NHS England – Pharmacy email: [no-reply@app.onlinesurveys.jisc.ac.uk](mailto:no-reply@app.onlinesurveys.jisc.ac.uk)

Use the unique link in the email to verify your details and sign the declaration

## New Designated Supervisors

You must complete the online registration form

[Registration Form for new Designated Supervisors](#)

More details on the NHS England [website](#)

Summer registration deadline date is 12:00 (midday) on Monday 15 June.

Missed deadlines will result in the trainee(s) being deferred to the Autumn start window.



# Trainee Start Eligibility

## Programme start window:

**Summer:** 13 July to 3 August 2026

**Autumn:** 19 October to 9 November 2026

Trainees may only start once all the following are complete:

- MPharm/OSPAP completed satisfactorily
- Designated Supervisor registered with NHS England
- GPhC registration submitted via MyGPhC

The [terms of participation](#) stipulate that trainee must have signed contract of employment and a completed training plan

# Support for Supervisors

# National E-portfolio Drop-in Sessions with Joining links 2025-26

The drop-in sessions are open to all Supervisors (DS/DPP) and Foundation Trainee Pharmacists in any region in England

## Next drop-in session:

**14/05/2026** 12.30 – 13.00 [Join the meeting now](#)  
**19/05/2026** 20.00 – 20.30 [Join the meeting now](#)  
**27/05/2026** 12.30 – 13.00 [Join the meeting now](#)

Full details and joining links are available via the [Learning Hub Catalogue](#)



There is no need to register to attend the session



This is purely a question & answer session. There will be no presentations by NHS England



If you have any questions, please attend the session and state your role before asking the question (this can be either in the chat or you can unmute yourself)



If you have a sensitive/confidential question, please email your regional lead as this is an open forum



The drop-in sessions will be approximately 30 minutes long but may be extended at the discretion of the host.



These sessions will not be recorded to create a safe space.



In the unlikely event of a shortage of facilitators, we reserve the right to cancel the session, but we will notify you with as much notice as possible



If you have not done so already, please watch the RPS/NHS England induction webinars that can be found [here](#).

# Supervisor/Educator Sessions – Midlands

DS/EPD Sessions	Dates	Links
<b>The Final Sign-Off</b>	10 June 2026 at 12:30 – 13:30	<a href="#">Register Here</a>
<b>Educator Drop-in Session:</b> suitable for DS/EPD/DPPs	8 July 2026 13.00 – 13.45	<a href="#">Register Here</a>

We are planning dates for new educational supervisors and will share these soon.



# Independent Prescribing Courses

2026/27 – NHS England Funded Training





# Independent Prescribing Courses 2026/27

## Application for NHS England funded places is now open

Pharmacists who meet the eligibility criteria can apply for independent prescribing courses to university of their choice if included in the national provision.

Cohort start dates and mode of delivery vary and learners need to meet the course requirements.

- 1. Community pharmacists** (including locum pharmacists); **Pharmacists employed in General Practice** (who are not eligible for, or enrolled on, the Primary Care Pharmacy Education Programme (PCPEP) and those who are working to provide primary care services (e.g. working in primary care) who are not employed in ARRS roles); and **Health and Justice pharmacists**
- 2. Pharmacists enrolled on CPPE's Primary Care Pharmacy Education Pathway (PCPEP)** and who meet the PCPEP criteria to enrol on an independent prescribing course
- 3. Pharmacists working in an NHS Hospital Trust or Mental Health Trust** (NHS managed sector); **pharmacists working in an integrated care board (ICB)**, previously CCG pharmacists.

# Independent Prescribing courses 2026/27

- Pharmacists who meet the eligibility criteria can apply to the university of their choice if the university provider is on the [NHS England website](#).
  - The support of an identified designated prescribing practitioner (DPP).
  - An appropriate practice-based learning environment in a prescribing setting that can offer appropriate clinical support.
  - Evidence that you meet the course provider eligibility criteria (applicants will be subject to their chosen university's enrolment processes).
  - Commitment to use the skill within your area of competence and expertise, for the delivery of NHS clinical services as they emerge. Pharmacists must be working in England.
- Universities are listed on the [NHS England website](#) by sector. Please note: the available universities differ depending on the sector you work in.
- Tuition fees are fully funded by NHS England. Pharmacists that are successful in applying to one of the approved universities will be allocated a fully funded place directly by the university. They do not need to apply to NHS England for funding separately.
- NHSE will only fund the course fees for eligible pharmacists at the universities outlined on our website. These providers were selected through a competitive tendering process.
- **For any further enquiries, please contact [england.pharmacyteam@nhs.net](mailto:england.pharmacyteam@nhs.net)**



# GPhC Entry Requirements

If you would like to know more about the General Pharmaceutical Council's eligibility criteria for entry to independent prescribing, please visit the [GPhC website](#).

The GPhC has approved changes to the requirements for entry to independent prescribing courses, including removing the requirement for two years' practice before starting a course.

It has been replaced by the following requirement:

“applicants must... have relevant experience in a pharmacy setting and be able to recognise, understand and articulate the skills and attributes required by a prescriber. Applicants must also identify an area of clinical or therapeutic practice on which to base their learning.”

Universities providing accredited courses will need to continue to apply the previous entry requirements until they have been approved against the revised standards but can go through a GPhC approval process to put these changes in place from 1 October 2022. Applicants must therefore check with the university to which they are applying to find out when they expect to be ready to accept applicants using the new entry requirements in the revised standards.



# Pharmacy Technicians



# Community Pharmacy Technician Apprenticeship Programme 2026



## National Launch

[Application of Funding](#) window open Monday 27 April until midday Monday 18 May



## National Engagement Events

You can access a recording along with the transcript on our [SWAY](#) page. [Guidance](#) to support completion of an application is available on our [website](#).



## Midlands Regional Engagement Events

[Wednesday 13 May 11.00-12.00](#)

# Midlands: What are we offering?

## Community Pharmacy Technician Apprenticeship Programme 2026



**Funding confirmed at £15,505 per year for 2 years.**



**National Launch event/s before regional application window opens.**



**The expression of interest process from 2024 and 2025 has been removed, this is a new designed application process for 2026.**



**Applicants will be required to denote what support and training is provided to the PTPT to meet the GPhC IET for Pharmacy Technicians 2017.**



**Contractor guidance notes if oversubscribed there is a prioritisation process in place.**



**Successful contractors would need to be ready to meet September 2026 target start date for PTPTs.**

# Next Steps



**Familiarise yourself with the GPhC IET standards for pharmacy technicians.**



**Think about the services you deliver. What training can you provide the PTPT and do these map to the GPhC IET standards?**



**Identify designated educational supervisor with capacity to support the PTPT**



**Complete the application of funding form**

# Updates from WT&E

# Education Commissioning Intention Letters



Education Commissioning Intention letters are due to be sent out in May for Pharmacy Programmes 2026/27



ETAP 2027-28: planning for future scoping is underway and details will be sent out in the next few months

## Contact us:

**General (PTPT, Foundation Pharmacist):**  
[england.wtepharmacy.mids@nhs.net](mailto:england.wtepharmacy.mids@nhs.net)

**Recruitment Queries:**  
[england.midlandsfoundationpharmacyrecruitment@nhs.net](mailto:england.midlandsfoundationpharmacyrecruitment@nhs.net)

**E-portfolio Access Issues (e.g., locked out):**  
[eportfolio@rpharms.com](mailto:eportfolio@rpharms.com)