

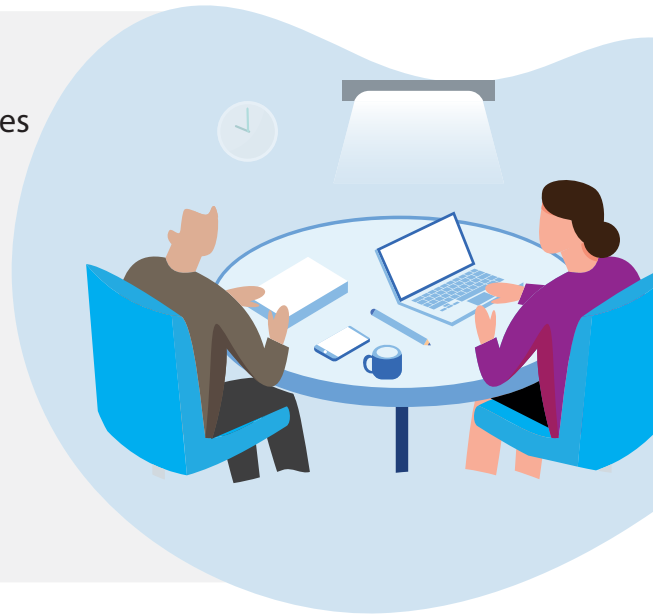
## Educational Supervisor Programme

The Educational Supervisor Training Programme is open to all registered pharmacy professionals whether a pharmacist or pharmacy technician who are responsible for the overall supervision and management of a specified trainee's educational progress during a period of training, placement, or a series of placements. This includes formal assessment and sign off.

### Modules

The programme includes five modules, three of the modules are delivered via flexible online learning whilst two of the modules will run as live online or face-to-face event.

- ✓ Introduction of Educational Supervision
- ✓ Facilitating Learning
- ✓ Giving Effective Feedback
- ✓ Assessment & Monitoring
- ✓ Supporting Trainees



### Key Features:

- ★ A dynamic, blended learning approach designed to accommodate busy work schedules
- ★ The opportunity to join peer discussions enabling you to share best practice
- ★ Choose between video and audio learning to suit your learning style
- ★ Access to a wealth of resources and the opportunity to get certified

### Requirements to complete the programme:

In order to successfully complete the programme and get certified you will be required to:

- ✓ Successfully complete all modules within a 3-month period
- ✓ Successfully complete end of programme assessments

### What is the cost?

The programmes are funded by NHS England and are FREE to join for learners in England.



To find out more and sign up visit

[propharmace.com/est](https://propharmace.com/est)