

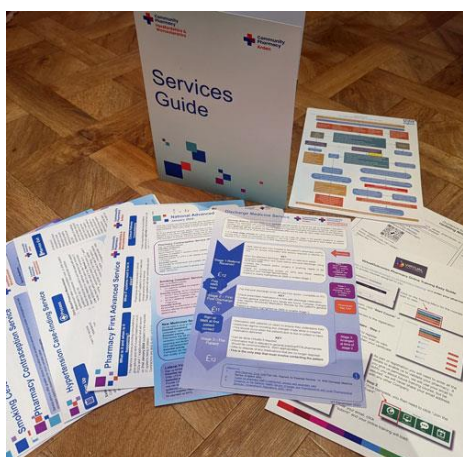


COMMUNITY PHARMACY ARDEN GENERAL UPDATE 11th January 2024

Information is subject to change and is as accurate as we can ascertain at date published.

Pharmacy Information Packs

Watch out for the pharmacy information packs which are being delivered to all pharmacies in the coming week. Put together by the LPC team, they contain a wealth of resources and information that we hope you will find very useful. The photo shows just some of what is included.



Part 1 - Connections	CPA – the committee, the team and system
Part 2 - National Services (one-page guides)	Essential Service – Discharge Medicine Service
	Advanced Services Overview
	Advanced Pharmacy First Service
	Advanced Hypertension Case-Finding service
	Advanced Pharmacy Contraception Service
	Advanced Smoking Cessation Service
	Advanced New Medicine Service
Part 3 - Resources	Virtual Outcomes Easy Login Guide
	Clinical Pathways PFS 7 pages
	Updating NHS Profile Guide
	Trainee Pharmacist Guide (the new way placements split etc)
	Claim Guide
	Annex D CW

You will also find electronic copies of the national services PDFs on our website [here](#). Please feel free to print off any additional copies as needed.

Pharmacy First F2F Training

All January dates are now fully booked for the f2f training with ECG. There are still places available for the mop-up session on 18th February in Redditch with CPPE. If you missed our previous communications about this, here's a link to the [booking instructions](#). You will need to email us first with your details to receive a code that you can use at the checkout – this is all detailed in the booking instructions above – make sure you follow them carefully. Please note it is not possible to swap the January places as they are now all finalised. This training is for pharmacists working within the CW and HW LPC areas only.

CPE Pharmacy First Resources: Starting to prepare

CPE has compiled some quick reference resources for pharmacies to help them prepare for the launch of the service at the end of the month. Some of these resources include:

[Pharmacy owner checklist: getting going with the Pharmacy First service](#)

[Pharmacist checklist: getting going with the Pharmacy First service](#)

[Initial briefing for pharmacy teams](#)



More information can be found on CPE's Pharmacy First webpage [here](#).

Furthermore, recordings of CPE's previous webinars can be accessed from this [page](#), including the newly recorded Hypertension Case-Finding Service webinar from last week.

Foundation Year Pharmacist Training

We have added some resources to the [Training section](#) on the LPC website - please find these below:

[Foundation Pharmacist Training Summary of Key Points](#)

[YouTube Narrated Presentation \(NHS\)](#)

[YouTube Narrated Presentation \(NHS\) Summary version](#)

NHSE Oriel Gateway 2025/26 registrations: Key Points

- For the 2025/26 cohort, the **only route into pharmacist training** will be via the NHSE Oriel system.
- Employer registration for the 2025-26 cohort year opens on 11 January 2024 and will close at 23:59 on **1 March 2024**.
- For the 2025/26 training year, all trainees will need access to a prescribing environment and designated prescribing practitioner. It is the responsibility of the pharmacy employer to enable this.

More information can be found on the [National pharmacy recruitment website](#) and on the links below:

[Oriel Gateway](#)

[Employer Oriel Access Guide](#)

[Oriel registration queries drop-in sessions via MS Teams January-March 2024](#)

Please look out for the update expected imminently around details for DPP requirements which should help with your applications. We highly recommend attending one of the drop-in sessions detailed above.

CPE Survey: Opinion Poll for Pharmacy Owners

Community pharmacy owners are being asked to share their views on preparations for Pharmacy First, ahead of the next CPE Committee meeting at the end of January.

The survey link below is for independents and non-CCA multiples only! The survey is open until 21st January:

[January 2024 Committee Opinion Poll](#)

CCA HQs have been sent the survey directly, so it does not require action at branch level. Details on CPE [here](#).



If you have any questions or comments regarding this update, please contact the LPC Team.
Copies of our previous newsletters can be found [here](#).

CONTACT INFORMATION:

Office Phone M-F 10-3 or answer phone outside of this time: 01386 897529

Office main email: ahwlpc@gmail.com

Support Officer: eva.ahwlpc@gmail.com

Chief Executive Officer: fionalowe@nhs.net
07792970382

USEFUL LINKS:

[CPA Website](#)

[CPHW Website](#)

[CPE Newsletters](#)

[CPE Payment Timetable and Deadline Tracker](#)

[CPE CPCF Important Dates](#)