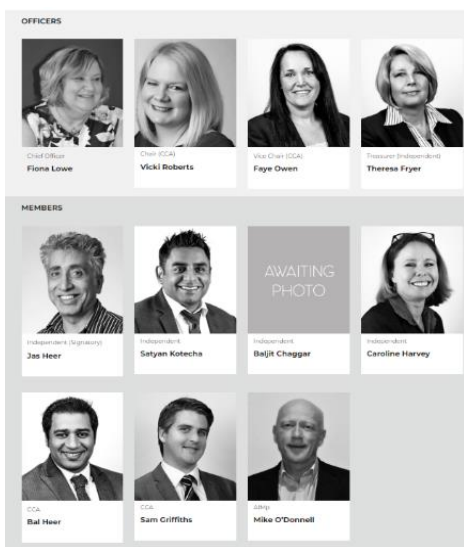


## Community Pharmacy Arden CPA – (Coventry and Warwickshire LPC)



**We are pleased to confirm that the merger has gone ahead as voted for by Contractors. Please do come and meet the 10 Members at one of our LPC Meetings or events – there are many familiar faces!**

We are in the process of updating our websites to combine the information onto the former Coventry LPC site. [Committee – Community Pharmacy Arden \(coventry\)lpc.co.uk](http://Committee-CommunityPharmacyArden(coventry)lpc.co.uk) . Our excellent support team and office function is still in place. We are gradually moving back to manning the office most weekdays at least between 10 and 1. Generic office contact is [ahwlp@gmail.com](mailto:ahwlp@gmail.com) . We also have a new CPA email [communitypharmacyarden@gmail.com](mailto:communitypharmacyarden@gmail.com). We also have two part-time implementation leads for GPCPCS, funded through NHSEI for a period 6-9 months. Lisa Siembab and Richard Birrell who can be contacted on [cwservices.lpc@gmail.com](mailto:cwservices.lpc@gmail.com).

We are finalising year end for 21-22 for each outgoing LPC and will transfer all the funds to the new CPA Account. There will be AGMs when the accounts will be presented as usual in the Autumn. Each LPC has contributed funds in proportion to the number of Contractors each represented to CPA – equating to approximately £1.2-1.4K per Contractor. The outgoing LPCs provided 4 months Levy Holiday 21-22 to ensure alignment and take account of reduced expenditure on travel and face to face meetings during the pandemic. CPA has started collecting levies from all Contractors as of April 2022 equivalent to the sum of those collected by the outgoing LPCs (currently set at £1,092.93 per Contractor per year ave for 22-23). This will be reviewed ahead of the next financial year 23-24. We anticipate that we may be able to provide a Levy Holiday prior to the end of 22-23 and we will confirm this within our Annual Report in the Autumn.

As we move back to some degree of normality, we expect to have more face-to-face sessions for yourselves, the LPCs and with stakeholders. We will still offer some online training and information sessions as well. This is another big period of change with the Pharmacy Contractual Framework being gradually moved to the ICB part of the ICS Coventry & Warwickshire system for monitoring and support over the next 12 months. The CCG role will move to the ICB which will be formed in July 2022. One of the main reasons that we decided to form a merged LPC is to be coterminous with the ICS. PLACE (Coventry, Rugby, North Warks and South Warks) and the Primary Care Networks (PCNs) will also continue to be important. **This is all in line with the outputs of the Wright Review and the vote coming out shortly from the RSG who have taken the work forward.**



We had our first face to face training session on GPCPCS in March, which was well attended. We will still offer some online training and information sessions as well.

We are planning an engagement afternoon / evening in July on 7<sup>th</sup> for Contractors and Stakeholders.

You are also welcome to join the open sessions of our LPC Meetings. The planned dates are: 5<sup>th</sup> May, 7<sup>th</sup> July and 8<sup>th</sup> September at the Citrus Hotel are the first three. (10<sup>th</sup> November, 12<sup>th</sup> January and 9<sup>th</sup> March TBC whether online or face to face). The AGM will be in October and we also hope to restart visiting pharmacies this year too.

The LPC Members will each have a network / PCN to support, alongside the employed Team as well as being part of working groups.

Name	Member / Team	PCN Leading	Subgroups (Lead in Red)	Other roles
Fiona Lowe	Team	Rural, North - North Warks	Exec & Finance, Governance, Contractor Support, Stakeholders, (Support for Services, Regulatory & Comms)	Chief Officer
Zoe Ascott	Team	Alcester & North - South Warks	Governance, Regulatory, Contractor Support & Comms (Support Finance – Warks)	Administrator & Gov Lead
Kathy Robinson	Team	n/a	Services & Stakeholder Engagement (Support Comms)	Services Support Officer
Susan Karoly-Smith	Team	n/a	Comms & Contractor Support (website)	Digital Admin & Website
Jas Heer	Indep Member	Coventry Central & Navigation 1	Exec & Finance, Regulatory	Signatory
Vicki Roberts	CCA Member	SOWE & Go West	Exec & Finance, Governance	Chair, signatory
Baljit Chaggar	Indep Member	GP Connect – Coventry & Skyward	Contractor Support	
Bal Heer	CCA Member	Coventry North & Unity	Services	
Faye Owen	CCA Member	Rugby	Exec & Finance, Governance,	Vice Chair, signatory
Theresa Fryer	Indep Member	Leamington North & South	Exec & Finance, Governance, Regulatory	Treasurer, signatory
Satyan Kotecha	Indep Member	Nuneaton & Bedworth (formerly 3 PCNs)	Contractor Support, Stakeholders	
Caroline Harvey	Indep Member	Warwick & Kenilworth, East	Services, Regulatory – market entry	
Mike O'Donnell	AIMP Member	North & Rural	Governance, Regulatory – market entry	
Sam Griffiths	CCA Member	Dene & Stour, Stratford Central, Arden	Services	

Subgroup / Activity	Support	CPA April 2022 onwards
Executive & Finance Group	Zoe	Fiona + Vicki, Faye, Terry Jas
Governance Group	Zoe / CO	Fiona, Vicki, Faye, Mike, Terry
Regulatory Group	CO	Jas, Terry, Zoe (market entry additional support Mike, Caroline)
Contractor Support & Engagement Group & Marketing	Support Office Susan – Website & social media	Bal C, Sat, Fiona, LPC Team.
Services	CO	Bal H, Sam, Caroline, Kathy
Stakeholder Engagement	Support Office	Fiona, Sat, Exec & LPC Team
Communications	Support Office	Zoe & LPC Team

You can contact us on:

**Community Pharmacy Arden - CPA (Coventry & Warwickshire LPC)**

Chief Officer Mobile: 07792970382 [fionalowe@nhs.net](mailto:fionalowe@nhs.net) [communitypharmacyarden@gmail.com](mailto:communitypharmacyarden@gmail.com)

LPC Office: Unit 24 Basepoint Business Centre; Crab Apple Way, Vale Park, Evesham, WR11 1GP

Office Phone: 01386 897529; [ahwlpc@gmail.com](mailto:ahwlpc@gmail.com)

t: @AHLWPC

*engage – share - collaborate*